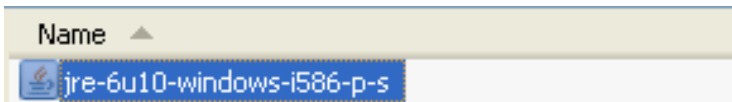


How To Install Modem Driver

1. Open folder “**USB Driver Modem XTEND**”
2. Double click file “**jre-6u10-windows-i586-p-s**”






3. Click **Accept**



4. Click **Finish**



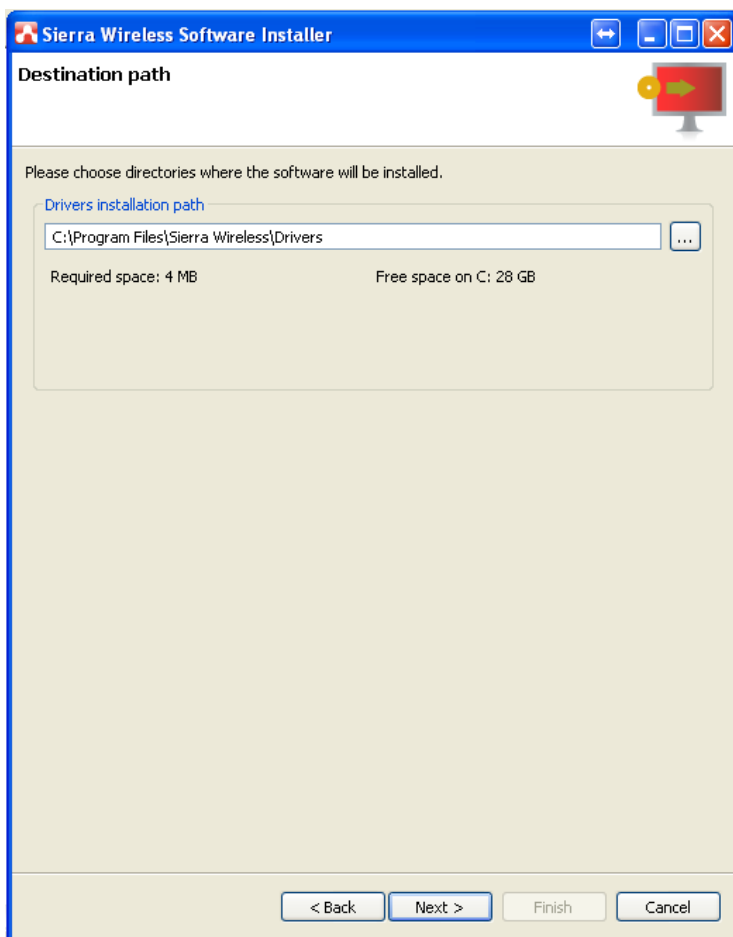
5. Double click file “**USBDriverInstallerV3841**”

Name ▲	Size
 How To Install Modem Driver	1,013 KB
 jre-6u10-windows-i586-p-s	15,926 KB
 USBDriverInstallerV3841	34,901 KB

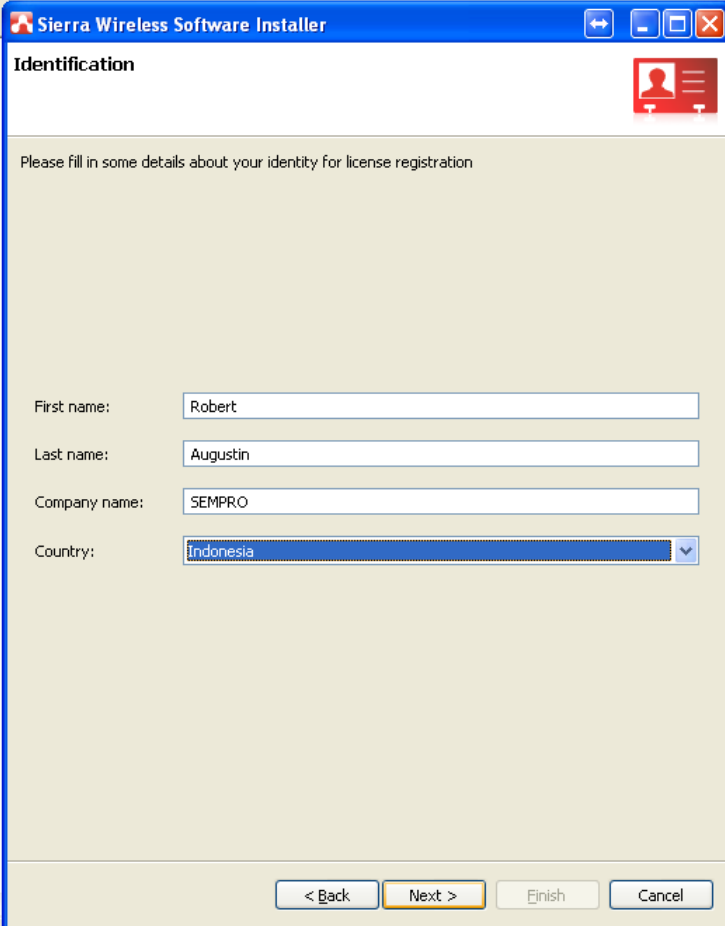
6. Click **Next**



7. Click **Next**



8. Fill in some details and click **Next**



The image shows a screenshot of the 'Sierra Wireless Software Installer' window. The title bar is blue and contains the text 'Sierra Wireless Software Installer' along with standard Windows window controls (minimize, maximize, close). The main window has a light beige background. At the top left, the word 'Identification' is displayed in bold black text. To the right of this text is a red icon depicting a person's silhouette. Below the title bar, a message reads: 'Please fill in some details about your identity for license registration'. There are four input fields: 'First name:' with the text 'Robert', 'Last name:' with 'Augustin', 'Company name:' with 'SEMPRO', and 'Country:' with a dropdown menu showing 'Indonesia'. At the bottom of the window, there are four buttons: '< Back', 'Next >', 'Finish', and 'Cancel'. The 'Next >' button is highlighted with a yellow border.

Sierra Wireless Software Installer

Identification

Please fill in some details about your identity for license registration

First name:

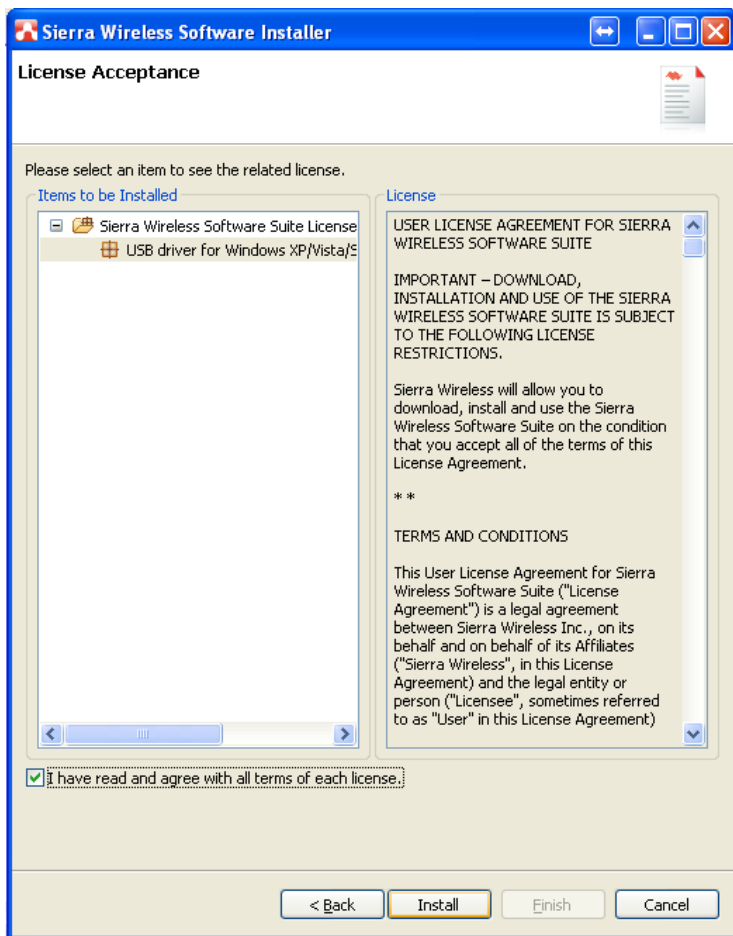
Last name:

Company name:

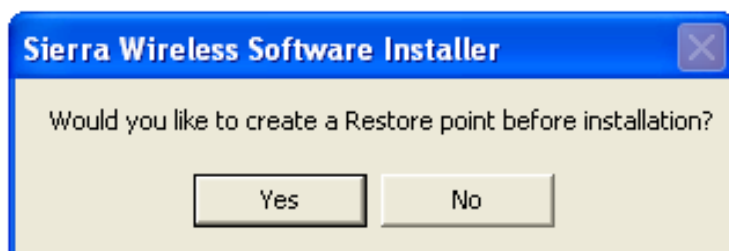
Country:

< Back Next > Finish Cancel

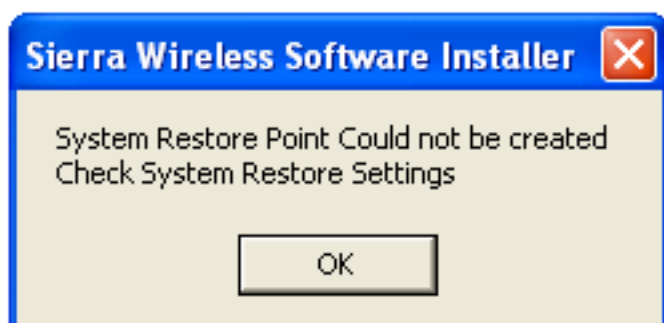
9. Select “**USB driver for Windows XP/Vista/Seven (3.8.4.1-201209251729)**” and mark “I have read and agree with all terms of each license” and click **Install**



10. Click **Yes**



11. Click **OK**



12. Click **Finish**

